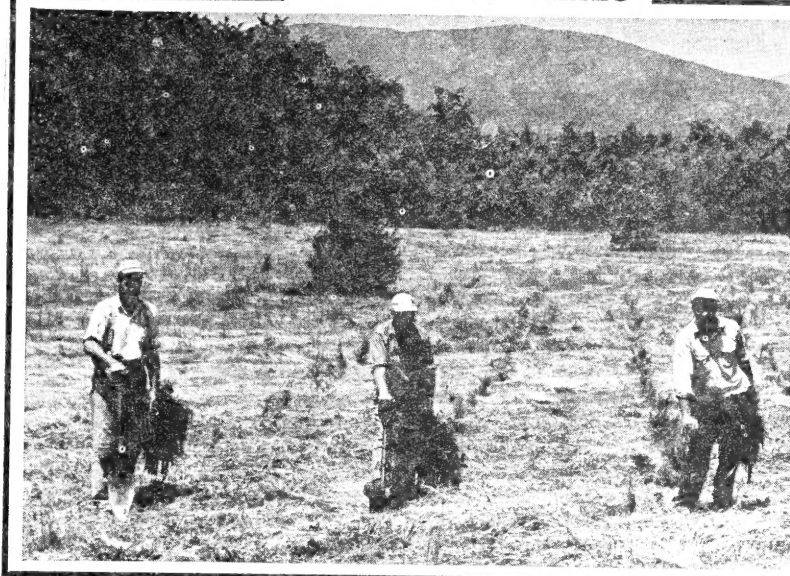


62
SB115
2937
R

[1959]

Plant

CHRISTMAS TREES



Proper planting technique: First man with trees in left hand and shovel in right is ready to make the hole. Second man is inserting shovel straight into the ground. Third man has inserted shovel and has handle pushed ahead, forming opening for tree back of shovel. Fourth man, while keeping shovel pushed ahead with his foot, has taken one tree from the bundle carried in his right hand and is putting it in hole. Fifth man has removed shovel and is closing opening by stamping each side with his heel. On cleared land such as shown here, one trained man can easily plant 1000 trees a day.

Christmas Trees are always at the top of the market.

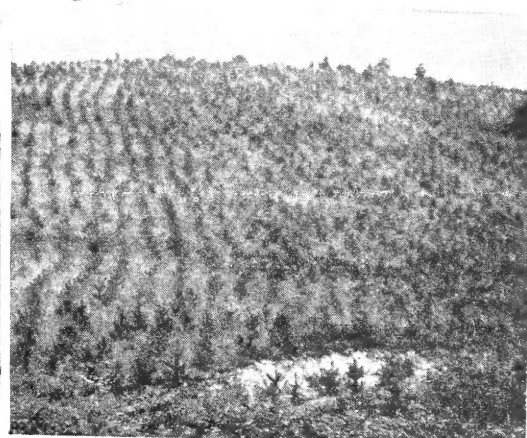
Trees will increase the value of a property if it is being held for resale.

A Tree Plantation is an excellent savings account with a high rate of interest.

Trees will pay for a college education for your children if started early and properly managed.



JUNIPER VIRGINIANA
(Redcedar)



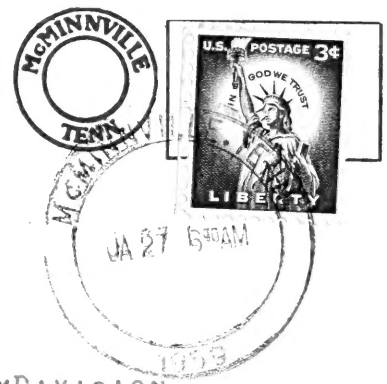
Prices-Red Cedar - Per 100	Per 1000
For Christmas Tree Plantings	
4 to 6 inch sldgs. 2.00	15.00
6 to 12 inch sldgs. 2.50	20.00
12 to 18 inch sldgs. 3.00	25.00

Christmas tree harvest plants grow readily on abandoned farm land; 3- 4 years. Some trees may be left for timber.

*Special
Price List
for
COUNTY*

**AGRICULTURAL AGENTS
AND EXTENSION WORKERS**

LIBRARY
RECEIVED
★ FEB 13 1959 ★
U. S. Department of Agriculture



BIBLIOGRAPHY DIVISION
LIBRARY, U.S. DEPT. OF AGRICULTURE
WASHINGTON 25, D.C.



BOYD NURSERY COMPANY, McMINNVILLE, TENNESSEE

FRUIT TREES

APPLE TREES

YELLOW TRANSPARENT. One of the earliest apples to ripen, clear yellow white flesh, slightly acid, bears while very young.

ANOKA. Large dark red and of good flavor, the quickest known apple to come into bearing.

RED JUNE. This is a medium size apple, good for eating and also cooking.

RED JONATHAN. Rich red, bears young, this variety good for shipping and keeps well.

YELLOW DELICIOUS. A GOLDEN YELLOW APPLE WITH GOOD FLAVOR, good to eat and keeps well, one of the best winter apples.

DOUBLE RED DELICIOUS. Fruit extra large, bright red, white flesh, rich, melting and juicy, the fruit is of the highest quality.

STAYMAN WINESAP. Bright red skin, firm, juicy, fine white flesh, excellent for eating, canning, and cooking.

RED WINESAP. A red apple with excellent flavor and one of the best for winter storage, good for home use, cooking, canning and eating.

KINNARDS CHOICE. A delicious eating apple, large dark red, good for home and Market. Ripens in September.

GRIMES GOLDEN. One of the most popular apples for fall marketing. Full of rich spicy flavor, a favorite for home or orchardist.

- 2-3 feet whips 40c Each
- 3-4 feet whips 50c Each
- 4-5 feet Br. 65c Each
- 5-6 feet Br. 85c Each

FIGS

EVERBEARING FIGS. Medium sized fruits of yellowish brown in color from July until frost, sweet, good for eating and preserves.

Prices on Figs.

- 18-24 inch 40c Each
- 2- 3 feet 50c Each

STANDARD AND COMMERCIAL VARIETIES OF FRUIT TREES

ELBERTA. Fruit large, yellow with red cheek, flesh yellow, firm, juicy.

SULLIVAN EARLY ELBERTA. A good yellow freestone, ripens earlier than Elberta.

RED HAVEN. Large, color red, yellow flesh, good commercial variety.

HALE HAVEN. Good quality freestone, large yellow fruit, good for canning and shipping.

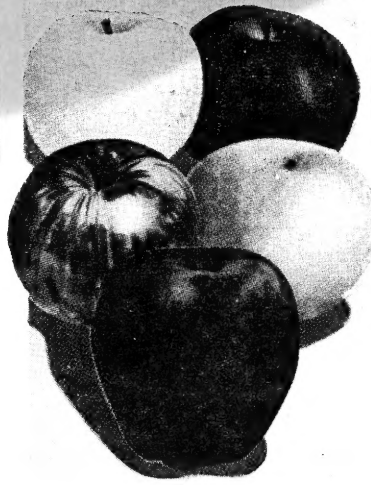
BELLE OF GEORGIA. Skin white, with red cheek, flesh white, firm and excellent flavor.

GOLDEN JUBILEE. Attractive golden yellow, freestone, good sized and quality.

INDIAN BLOOD CLING. Flesh deep red, good for pickling and preserves.

Price on standard varieties of peach trees.

- 12-18 inch 20c Each
- 18-24 inch 25c Each
- 2- 3 feet 35c Each
- 3- 4 feet Br. 50c Each
- 4- 5 feet Br. 60c Each



5-in-One APPLE

(5 varieties grafted on one tree)

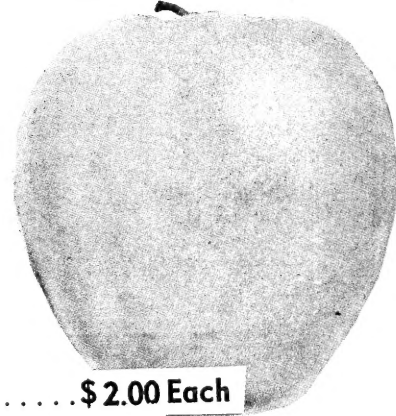
Yellow Delicious, Red Rome Beauty, Red McIntosh, Lodi, Cortland. Plant several of these novel trees for beauty, shade, and for fruit maturing over a long period.

Price on 5-N-1 Apple

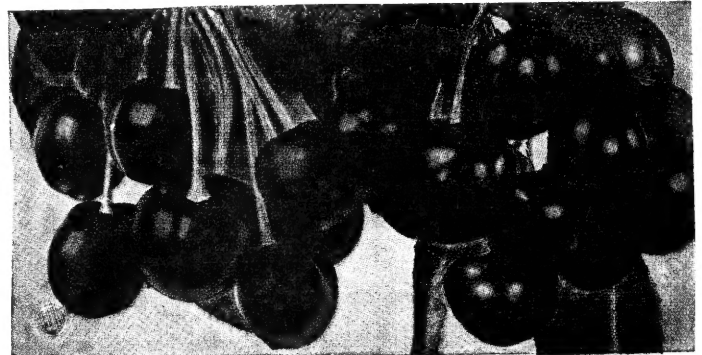
2 year 4-5 Feet Trees \$2.00 Each



RED DELICIOUS



YELLOW DELICIOUS



CHERRIES

BLACK TARTARIAN. (Sweet) Large black fruit of good quality.

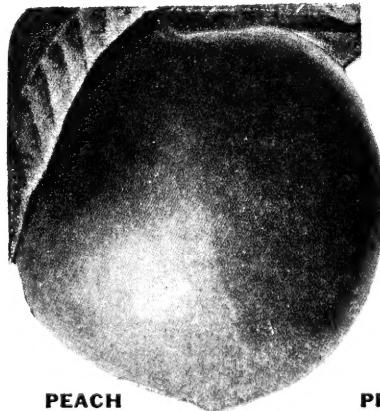
GOVERNOR WOOD. (Sweet) Medium sized fruit, pale yellow.

EARLY RICHMOND. (Sour) Dark Red Fruit, very hardy.

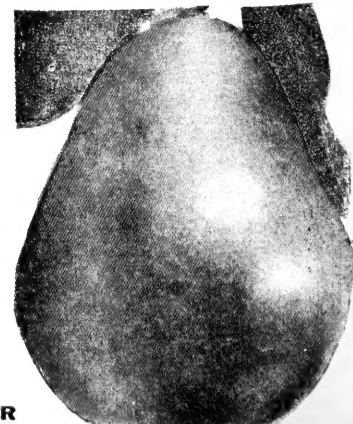
MONTMORENCY. (Sour) Fruit large and firm, bears in June.

Prices on Cherries.

- 2- 3 feet \$1.00 Each
- 3- 4 feet 1.25 Each
- 4- 5 feet 1.50 Each



PEACH



PEAR

SOFT SHELL PECANS

GRAFTED TREES

STUART PECAN

Hardest of the budded Paper Shell varieties. Can be successfully grown as far North as Southern Illinois. Nuts large, very delicious and of excellent quality. Trees ornamental and of rapid growth. A very profitable variety for Commercial planting. A grand Paper Shell variety for those located South of Central Illinois.

- 2- 3 feet\$1.75 Each
- 3- 4 feet 2.00 Each
- 4- 5 feet 2.25 Each
- 5- 6 feet 2.75 Each

Plant pecan trees for Profit, Shade and Beauty. They will pay big dividends within five or six years after planting and will continue to grow more valuable the trees grow older.

STRAWBERRIES

SEASONAL STRAWBERRIES

BLAKEMORE. Produces big crops of berries in the early spring, the berries are firm, excellent for freezing, canning and good shipping variety.

AROMA. Large, roundish conical, glossy red fruit of excellent quality and bears late in the season.

TENNESSEE BEAUTY. The fruit is medium red, wedge shaped, subacid flavor, good yielding variety.

TENNESSEE SUPREME. This is one of the earlier varieties, large round fruit uniform in size and shape, red throughout, firm but with juice, good for freezing.

Prices on Seasonal Strawberries.

Per 100....\$3.00 Per 500....\$10.00

EVERBEARING STRAWBERRIES

GEM EVERBEARING. The fruit is long, firm, red all the way through and of good flavor and quality, one of the best of the everbearing varieties.

Prices on Everbearing Strawberries.

Per 100....\$4.00 Per 500...\$16.00

CHINESE CHESTNUT

CHINESE CHESTNUT. These are some of the finest nuts grown, and are of good quality, blight resistant, these trees produce large well flavored nuts, while the tree is still young, be sure to plant two for pollination.

Prices on Chinese Chestnut.

- 18-24 inch 60c Each
- 2- 3 feet 75c Each
- 3- 4 feet 1.00 Each

APRICOTS

EARLY GOLDEN. Fruit, orange in color, flesh orange, moderately juicy, sweet and good, ripens in August.

MOOREPARK. Fruit, large, orange in color, flesh, bright orange, firm, and sweet.

Prices on Apricot.

- 18-24 inch 35c Each
- 2- 3 feet 50c Each
- 3- 4 feet well Br. 65c Each
- 4- 5 feet well Br. 85c Each

PLUMS

ABUNDANCE. Large, red skin, sweet yellow flesh.

BURBANK. Red fruit, good for marketing and canning.

BLUE DAMSON. Dark purple fruit, excellent for preserves.

KELSEY JAPAN. Color greenish yellow, flushed with red, very large.

SAPA. Dwarf in habit, good for jam and jelly.

Prices on plum trees.

- 18-24 inch 35c Each
- 2- 3 feet 50c Each
- 3- 4 feet Br. 65c Each
- 4- 5 feet Br. 85c Each

RASPBERRIES

LATHAM RED. Large firm berries and delicious in flavor and can be eaten fresh, or as preserves, Jams or jelly, strong vigorous grower that bears enormous crops.

CUMBERLAND BLACKCAP. The berries usually large, black, firm, widely planted, thrives most any soil.

Prices on Raspberries.

Per 10	Per 25	Per 100
\$3.00	\$6.00	\$17.50

BOYSENBERRY

HARDY BOYSENBERRY. The Boysenberry makes a big plant, we advise to plant them about 6 or 7 feet apart. They bear while young bears large delicious fruits, of the finest flavor, cannot be excelled for Pies, Jelly, Jam or for canning.

Prices on Boysenberry.

Per 10	Per 25	Per 100
\$2.00	\$4.00	\$15.00

GRAPES

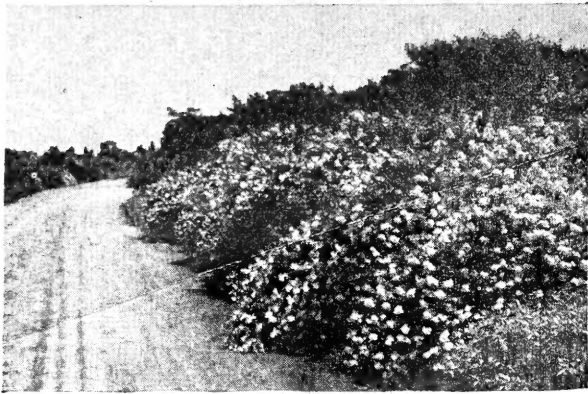
CONCORD. This is still the most popular blue grape, this is the commercial, table and wine variety, perfectly hardy, bunches are large, compact, and well shaped, sweet and juicy.

NIAGRA. Bunches and berries large, greenish white, changing to yellow when ripe, one of the outstanding white grapes.

DELEWARE. Medium sized berries but have the most delicious sweet flavor, one of the best grapes of the reds.

Prices on Grapes.

One year	20c Each
Two year	25c Each



ROSE HEDGE ROSA MULTIFLORA THORNY TYPE

A Living Fence — A Winter Paradise for Wild Bird Life

ROSA MULTIFLORA is a tall growing, very thorny shrub, like the wild rose. Very hardy even in poor soil. Grows 2 to 3 feet in a single season to an ultimate height of 6 to 8 feet. Ideal for use as living fence for farm use—keeps in cattle, horses, SHEEP and GOATS. Makes fast growing ground cover. Pinkish white blossoms literally cover plant in June. These are followed by profusion of large red berries which attract game birds such as grouse, pheasant, and partridge, as well as smaller birds. During winter its arching branches provide protection from snow and cold as well as food for birds.

ROSA MULTIFLORA JAPONICA, thorny type, BEST QUALITY, EXTRA

	Per 10	Per 100	Per 1000
6 to 12 inch, s.		\$ 3.00	\$ 25.00
12 to 18 inch, s.		5.50	50.00



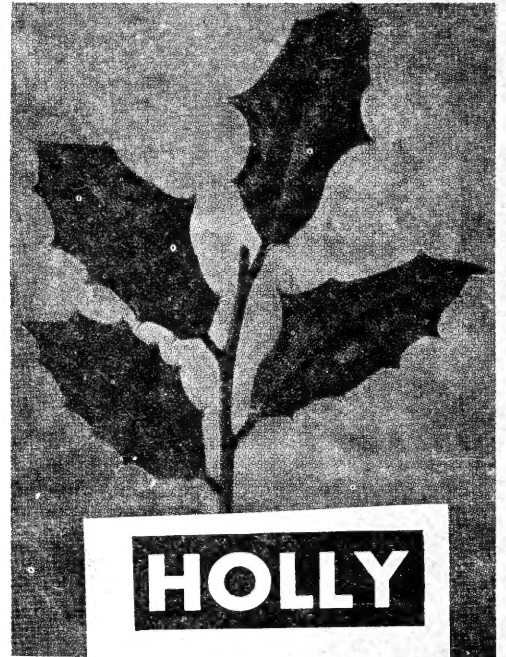
LOMBARDY POPLAR is well known as an effective screen for buildings, accent for entrance drives, or a background where terrain lacks novelty. Grows rapidly and thrives readily.

	Per 10	Per 100
6 to 12 inch, 1 yr. c.	\$ 1.00	\$ 7.50
12 to 18 inch, 1 yr. c.	1.50	10.00
18 to 24 inch, 1 yr. c.	2.00	15.00
2 to 3 feet, 1 yr. c.	2.50	20.00

NEW AND SENSATIONAL

FROM CHINESE WAR ZONE

America's only true dwarf peach tree that bears luscious fruit. Prolific, with beautiful double red flowers. Suitable for small gardens or patio tub plants. Never grows over 5 feet tall. Advertised in national magazines and newspapers at \$3.00 each, retail.



ILEX OPACA, American Holly

A beautiful plant, with its glossy leaves and red berries. All plants will not have berries, must have special care if successful in transplanting them.

	Per 10	Per 100
4 to 6 inch, s.	\$2.00	\$15.00
6 to 12 inch, s.	3.00	20.00
12 to 15 inch, s.	3.50	30.00



DWARF FLOWERING AND FRUITING PEACH. Truly a dwarf **Double Red Flowering** tree, at full maturity, never grows over five feet tall, in the spring covered with beautiful flowers, the leaves are long, narrow and very attractive and produces 200 to 300 medium sized, white flesh, peaches.

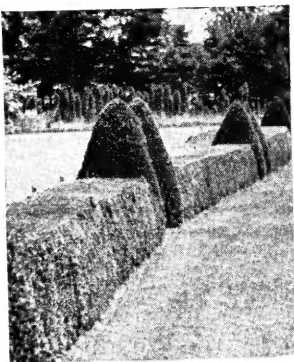
9-12 inch	75c Each
12-15 inch	\$1.00 Each

From year to year we have prepared a special list so that County Agents all over the U. S. A. could take co-operative orders for the Farm Families of their county and send all of the orders in, receiving these special prices. Orders will be individually wrapped and shipped in a group.

Prices are per each tree, F. O. B. McMinnville, Tennessee.
Wrapped for individual customers on the co-operative plan.

TOP QUALITY PLUS LOW PRICE
MAKE *Boyd* PLANTS
THE BARGAIN FOR YOU

Special 100 EVERGREEN HEDGE



LIGUSTRUM SINENSE, South Privet PRIVET HEDGE

Evergreen Hedge plants, 1, to 1 1/2 ft. Hardy, fast growing, most popular of all hedge plants.

25 plants	\$1.00
50 plants	1.50
100 plants	2.00

Special 3 FLOWERING TREES

All Grafted and Nicely Branched

- FLOWERING CRAB—4 to 5 ft.
- FLOWERING CHERRY—3 to 4 ft.
- PINK DOGWOOD—2 to 2 1/2 ft.

1 Each of
ALL THREE **\$6.00**
\$2.50 EACH